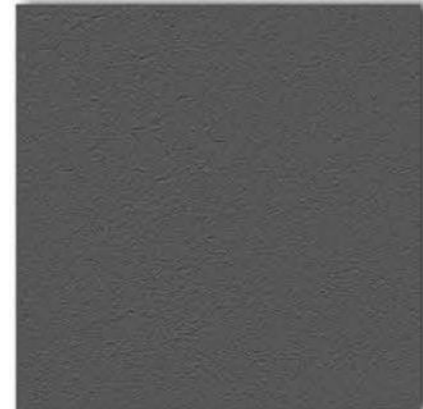




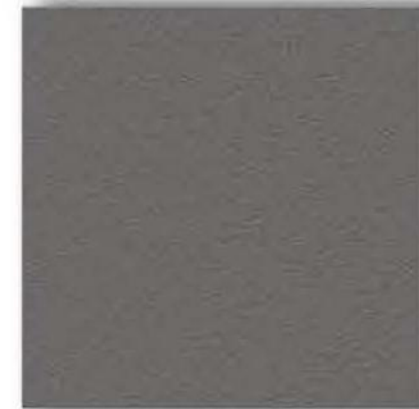
EIFS-1  
MANUFACTURER:  
STO CORP / STO ESSENCE  
COLOR: NA17-0050  
FINISH: FINE SAND  
COLOR TO MATCH  
SW 9162 - AFRICAN GREY



EIFS-2  
MANUFACTURER:  
STO CORP / STOLIT 130D  
COLOR: NA17-0049  
FINISH: FINE SAND  
COLOR TO MATCH  
SW 7674- PEPPERCORN



EIFS-3  
MANUFACTURER:  
STO CORP / STOLIT MILANO  
COLOR: NA17-0049  
FINISH: ULTRA SMOOTH  
COLOR TO MATCH  
SW 7674- PEPPERCORN



EIFS-4  
MANUFACTURER:  
STO CORP / 310 STO  
COLOR: VT181913  
FINISH: FINE SAND



EIFS-5  
MANUFACTURER:  
STO CORP / 310D STO STOLIK  
COLOR: DARK + GLOSSY 37100



ALUMINUM PANELING  
MANUFACTURER:  
KNOTWOOD  
COLOR: KE150  
FINISH: TEXTURA BLACK



METAL-1  
MANUFACTURER:  
PAC CLAD / ALUMINUM COPING  
COLOR: SILVER  
FINISH: PRE-FINISH



METAL-2  
MANUFACTURER:  
PAC CLAD / ALUMINUM COPING  
COLOR: MATTE BLACK  
FINISH: PRE-FINISH



METAL-3  
MANUFACTURER:  
ATAS / I-PIECE  
COLOR: BRILLIANT BLUE  
FINISH: STERRA CORE (MCM)  
PRE-FINISH



CURTAIN WALL  
MANUFACTURER:  
KAWNEER 1600 WALL SYSTEM  
COLOR: TEMPERED CLEAR GLASS  
FINISH: GREY TINTED



PAINT  
MANUFACTURER:  
SHERWIN WILLIAMS  
COLOR: SW9132 AFRICAN GREY



## Exterior finishes

